

**ADAPTABLE AND INNOVATIVE MOBILE CRANE SOLUTIONS**



# **LIFTING TO A HIGHER STANDARD**

Johnson & Young Cranes (JYC) is a dynamic, customer-focused crane business supplying crane hire and ancillary services across Australia.

JYC has developed a widespread reputation for its innovative and professional approach to consultations, engineering, and client support – commencing with the tender process, through to planning and project completion.

## ***JYC - People are their strength***

JYC is a family with high standards, shared values about what is important, and a proud history of exceptional performance. JYC's staff are passionate and committed; understand the constraints, challenges and possibilities of every project; and know the right attitude is essential.

## ***JYC - Leading the way***

JYC is implementing new technologies and methodologies with the most efficient, adaptable solutions available. The JYC team, and their equipment, are expected to meet the highest of standards, while regular third-party reviews, and continuous training and education, mean the workforce are experts in their fields.

## ***Our services include:***

- *Mobile Cranes*
- *Crawler Cranes*
- *Pick & Carry Cranes*
- *Lift Studies & Engineering*
- *Consultations & Inspections*
- *Emergency Services*
- *Transport Solutions*
- *Steel Erection*
- *Pre-Cast Panel Erection*
- *Wind Turbine Maintenance*
- *Rail Occupation Works*
- *Heavy Haulage*



# OUR COMMITMENT TO EXCELLENCE

JYC's Commitment to Excellence ensures projects are completed professionally and with the greatest integrity, according to tried and tested company procedures and strategies. They offer the best quality service every step of the way.

## Professional lift preparation

### **JYC Project Managers and Sales teams**

JYC's dedicated teams work with you to help develop commercially- focused budget estimates and rates for current and future projects.

### **JYC Engineering/Drafting team**

In close consultation with client engineers, JYC brings the latest technology to comprehensive reviews that assess and plan project requirements.

### **JYC Operations team - available 24 hours a day**

The latest web-based booking system manages every logistic.

## A premium fleet

### **JYC thrives on solving any logistics or equipment challenge**

JYC can meet the needs of every industry from wind farms to transport, infrastructure, construction and beyond. JYC's fleet is one of the newest and most up-to-date in the industry – meaning safe, reliable, agile solutions.

## A specialised heavy-lift division

### **With one of the largest heavy lifting fleets in Victoria,**

JYC are highly regarded and continually strive for excellence in the following heavy lifting spaces:

- bridge construction
- civil and commercial building construction
- wind turbine maintenance
- emergency call-out and works
- rail occupation works.

## Onsite capability and team experience

### **JYC recruit and train exceptional operators, riggers and associated trades people.**

Everyone, from crane drivers to onsite boilermakers comes with experience and a passionate commitment to JYC's vision and culture. They must also meet the requirements of third party Verification of Competency (VOC) assessments, and hold all applicable nationally accredited WorkSafe high-risk licences.

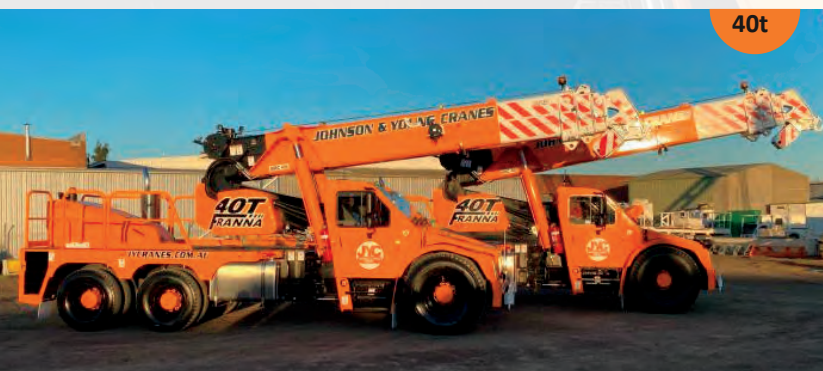
Working with cranes is a high-risk task, so project supervision is just as important as crane and equipment operation. JYC offers experienced supervision teams (e.g. lifting superintendents) with all the practical and technological equipment knowledge you need for a professional outcome.



LTM1750



LTM1250



AT-40



TADANO GR-200EX



PRIME MOVERS

# A PREMIUM FLEET

Boasting a crane fleet ranging from 3t - 800t, JYC also has everything from mini-crawlers to tilt trays, trucks and more. JYC's fleet is one of the newest and most up-to-date in the industry.

## Heavy Lift 350t - 800t

- 800t Liebherr LTM1750
- 400t Liebherr LTM1400
- 650t Demag Crawler Crane CC3800
- 350t Demag Crawler Crane CC2200

## All Terrain 55t - 250t

- 250t Liebherr LTM1250
- 100t Liebherr LTM1100
- 60t Liebherr LTM1060
- 55t Liebherr LTM1055

## Franna 20-40T

- 40t Franna AT-40
- 25t Franna MAC25 SL (Superlift)
- 25t Franna MAC25
- 20t Franna AT-20

## Other cranes & equipment

- 16t Tadano Bubble GR-160N
- 20t Tadano Bubble
- 13t Kato Bubble MR-130R
- 3t Maeda Mini Crawler MC285C
- Boom lifts

## Transport

- 18t Crane Truck Hiab X-Hiduo 188
- Heavy Haulage Trailers >100t capacity
- Prime Movers
  - Flat top trailers
  - Drop deck trailers
  - Skel trailers
  - Extendable trailers
  - Tilt trays
  - Gear trucks

# **JYC ENGINEERING**

Our in house engineering team use the latest technology and software to assist in designing and planning of every aspect of your lifting needs whether it be a one off lift or project wide cranaage.

With extensive experience in the crane industry our team can work closely from initial stages of planning providing input on design and rigging methodology of components to be lifted to ensure safe and efficient outcomes at the executions of all lifts.

Our Lift Plans/Studies are compliant for use on Tier One sites and our extensive standards, systems and internal review processes address all complexities of lifting ensuring all cranaage is carried out safely, efficiently and to the desired schedule.

## ***Our lift plans are offered with:***

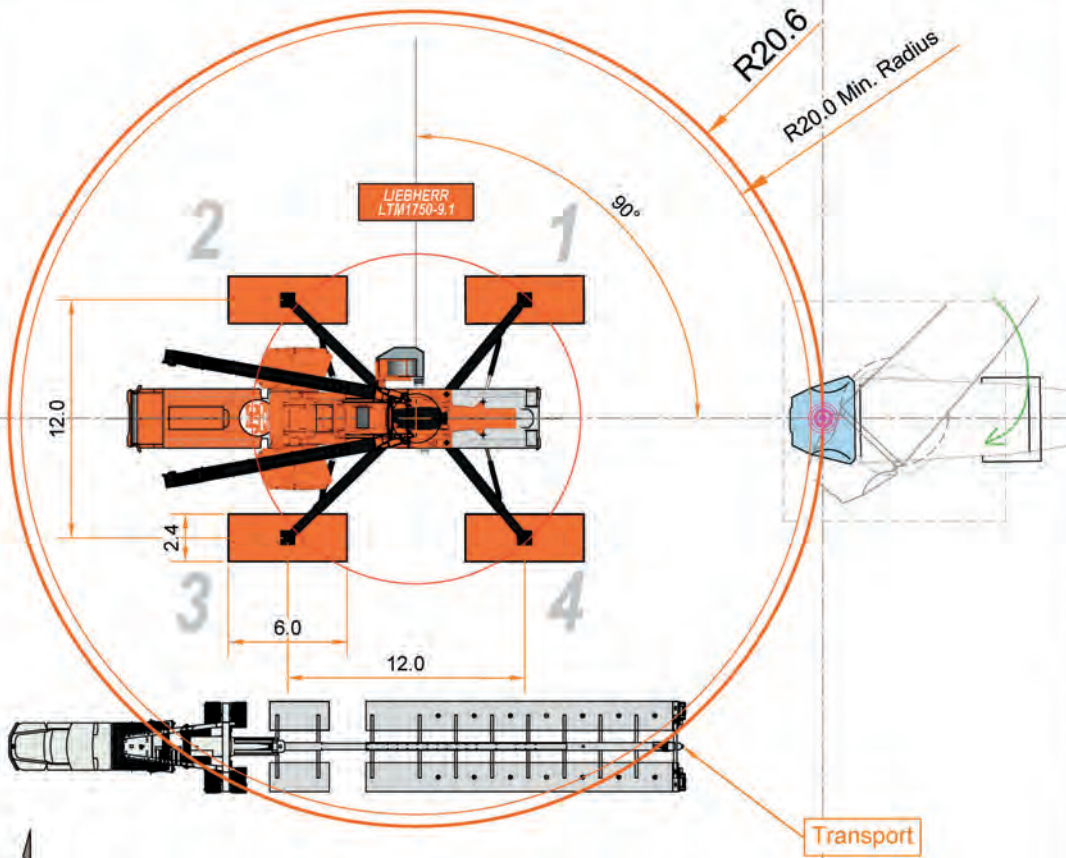
- Full 3D modelling/simulation
- 2D plan view with aerial imagery
- Elevation/Clash checks
- Complex rigging diagrams
- OEM generated ground loadings
- Full compliance with all relevant standards

## ***Our engineering team also offer:***

- Crane and heavy lift consulting
- Rigging and lifter design consulting
- Site inspections, client visits
- Prompt turn around on all services



PLAN



Transport

- NOTES FOR CRANE OPERATION**
- The client must prepare the access and site area to allow for installation and setup of the crane. This includes ensuring the support structure must be suitably prepared by the client to accept the outrigger/track reaction loads.
  - The rigging shown is based on the availability of equipment from JYC at the time of drafting this L&P. JYC may use alternative suitable rigging components when it is performed.
  - This drawing is to confirm that the structural integrity of all lift points and load are suitable for the rigging method proposed.



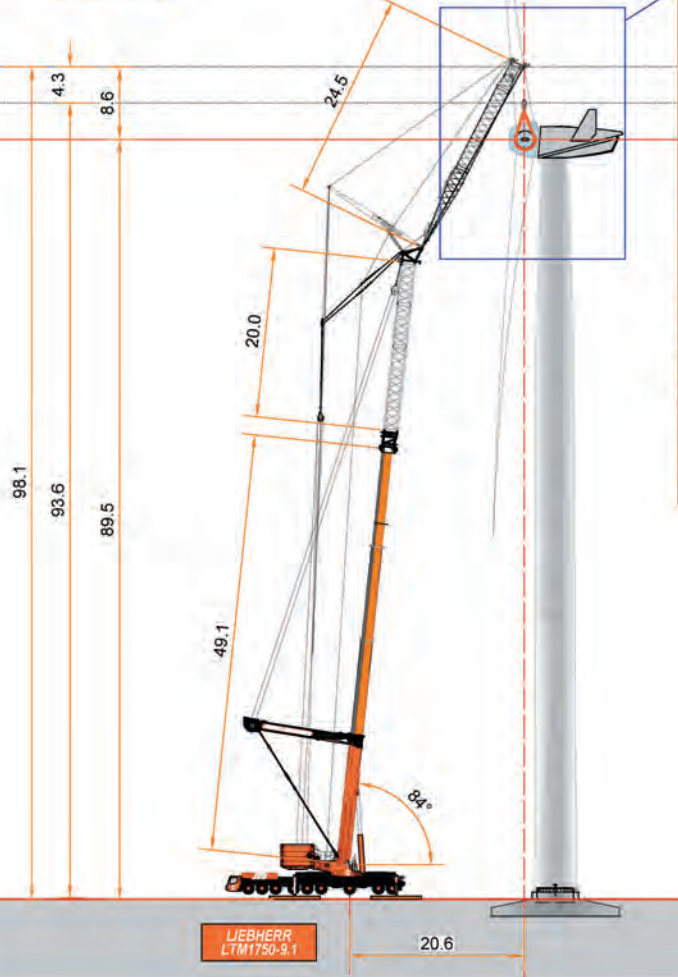
**Johnson & Young Cranes**  
 ABN: 74 765 954 685  
 173 Northbourne Rd, Campbellfield 3091  
 www.jycranes.com.au  
 Ph: 0339 3300

CLIENT: WIND FARM X  
 PROJECT: PROJECT X  
 LIFT PLAN: ROTOR 74T  
 ADDRESS:  
 DRAWN BY: OP DATE:  
 APPROVED BY: DATE:  
 DRAWING No.: Rev: 0 Scale: NTS  
 Issued For:

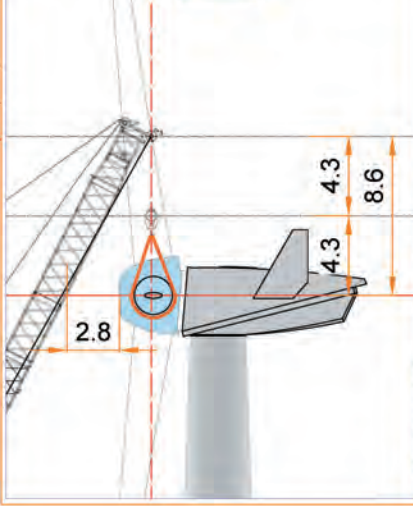
Crane Manufacturer & Model: Liebherr 1750-9.1	
Lifting Configuration	TYV23EN
Main Boom Length / Sequence	49.1m / +92+92+92
Jib Length / Offset	24.5m
Outrigger Spacing (L x W)	12m x 12m
Counterweight	134 tonne
Main Hook Capacity / Sheaves	95t / 3
Main hoist line Ø / Parts / Rated Line Pull	25mm / 7 / 14.2t
Total Reeved Line Pull (t) / % Utilisation	95.4   81.1
<b>Gross Capacity Deductions:</b>	
Main Hook Block Weight (t)	3.20
Main Hoist Wire weight (t)	0.00
Rigging Weight (t)	0.20
Auxiliary Weight (t)	0.00
Total Weight Deductions (t)	3.40
<b>Crane Capacity:</b>	
Weight of Lift Load (t)	74.00
Gross Load (t)	77.40
Chart Capacity (t)	83.80
Chart Radius (m)	20.60
% Utilisation	92.4
<b>Ground Pressure:</b>	
Maximum Outrigger Load (t)	163.00
Bog Mat Size (Length x width)	8m x 2.4m
Bog Mat Weight (t)	5
Applied Pressure under Bog Mat (kPa)	114.5

This drawing and information associated is property of Johnson & Young Cranes Pty. Ltd. The use or copying of this document without consent and written permission from JYC constitutes as an infringement of the copyright act and may result in legal action.

ELEVATION



DETAIL



**Johnson & Young Cranes**  
 ABN: 74 765 954 685  
 173 Northbourne Rd, Campbellfield 3091  
 www.jycranes.com.au  
 Ph: 0339 3300

LIFT PLAN: ROTOR 74T  
 ADDRESS:  
 DRAWN BY: OP DATE:  
 APPROVED BY: DATE:  
 DRAWING No.: Rev: 0 Scale: NTS  
 Issued For:

Rigging Material (Option A) TBC				
No.	Description	WLL (t)	Qty	Unit Wt (kg) / Weight (kg)
1	80t Softsling (6.0m)	80	2	100.0 / 200.0
Total Weight (kg).....				200.0

Scan or click for 3D animation

**NOTES FOR CRANE OPERATION**

- The client must prepare the access and site area to allow for installation and setup of the crane. This includes ensuring the support structure must be suitably prepared by the client to accept the outrigger/track reaction loads.
- The rigging shown is based on the availability of equipment from JYC at the time of drafting this L&P. JYC may use alternative suitable rigging components when it is performed.
- This drawing is to confirm that the structural integrity of all lift points and load are suitable for the rigging method proposed.

This drawing and information associated is property of Johnson & Young Cranes Pty. Ltd. The use or copying of this document without consent and written permission from JYC constitutes as an infringement of the copyright act and may result in legal action.

# OUR PROJECTS

## Wind Farms

The JYC Heavy Lift Division includes 800t Liebherr and 650t Demag Crawler cranes. Both are optioned with wind kit attachments, which means JYC is well suited to wind farm maintenance and construction, conducting complex lift planning that includes component change-outs on a variety of turbines.







## ***Major Road, Bridge & Tunnel Projects***

JYC believes outstanding project success is created through continuous collaboration with clients, partners and colleagues.

- Metro Tunnel
- Westgate Tunnel Project
- Citi-Link Tulla Widening
- Webb Dock Redevelopment
- South Gippsland Highway
- Monash and Mordialloc Freeways
- Metropolitan Ring Road Upgrade
- M80 Northern Sections
- O'Herns Road Duplication
- St. Kilda Junction Tram Works
- Millers Road & Grieve Parade Bridge Sections
- Princes Freeway Upgrade
- Chandler Highway Upgrade
- Moggs Creek Bridge
- Rochester Rail Bridge
- EJ Whitten Bridge
- Sunbury & Palmers Roads
- Bendigo Station, Warrnambool Line & Ballarat Line Upgrades
- Glenferrie & Watergardens stations
- Barwon Heads Road Upgrade



## ***Level Crossing Removal - LXR***

JYC is an industry-leading specialist when it comes to rail works, with its Commitment to Excellence and safety. All challenges are met - from meticulous planning by the engineering team, to the professionalism of installation and site crews. JYC is the choice of many alliances and has a proud affiliation with the following:

- High Street, Reservoir
- Bell to Moreland
- Greens and Abbots Roads, Dandenong South
- Aviation Road, Laverton
- Cherry and Werribee streets, Werribee
- Glenroy Road, Glenroy
- Cranbourne line upgrade
- South Eastern Program Alliance
- Southern Program Alliance
- North West Program Alliance
- Western Program Alliance





## ***Building & Maintenance***

JYC is often required to plan a lift outside normal parameters – accommodating unique requirements and lifting restrictions. The JYC team works to create safe and versatile lifting solutions to meet your needs.

Projects include:

- Maintenance works at West Gate Bridge Painting Project
- Airconditioning Replacements - Corellian at Melbourne Central, Clarendon Street, Rio Tinto, Sharps Road, CSL, Altona Gardens
- Rialto Tower Maintenance Works
- Sensitive Freight Lifts MRI Replacement
- Epworth Monash University, St Leonards College
- Highpoint Glass Install @ 80m radius
- Stage Build for “Dancing with the Stars”
- Stage Build for “Ninja Warrior Australia”
- Mildura and Yarrawonga Substations
- Modular Home Installations
- Chisholm Prison
- Telco Communication Towers
- Factory Tank Removal & Installation





## CONTACT US

**Phone** 03 8339 3300

**Mail** Johnson & Young Cranes  
PO Box 77  
Somerton VIC 3062

**ABN** 74 795 954 655

**Email** Tender submissions and request for quotation  
[sales@jycranes.com.au](mailto:sales@jycranes.com.au)

For immediate bookings  
[bookings@jycranes.com.au](mailto:bookings@jycranes.com.au)

**Website** [www.jycranes.com.au](http://www.jycranes.com.au)

**Head Office & Depot**  
173-175 Northbourne Road  
Campbellfield VIC 3061

**South Eastern Office & Depot**  
70 Greens Road  
Dandenong South VIC 3175

### Satellite Depots

Preston, Laverton and Geelong